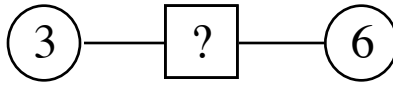


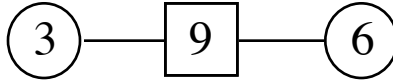
ADOGONS

RULE: the number in the square is the **sum** of the numbers in the circles on either side of it.

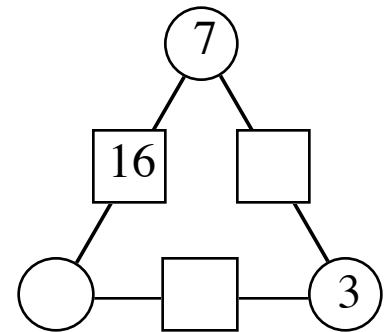
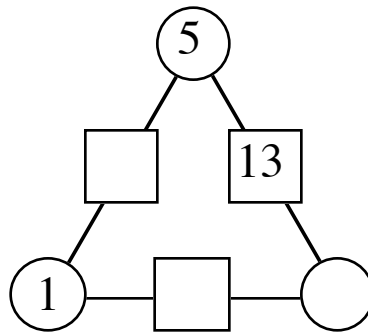
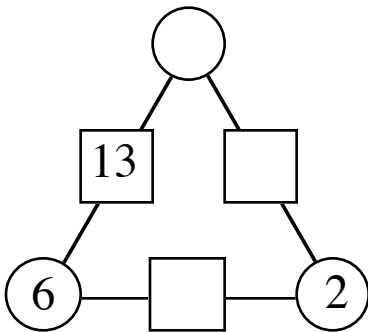
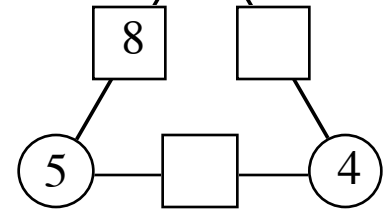
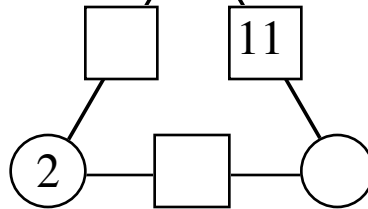
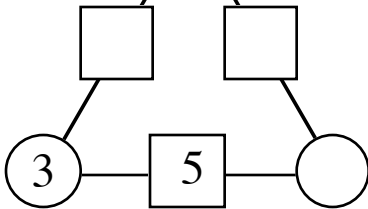
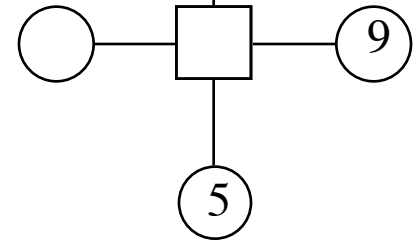
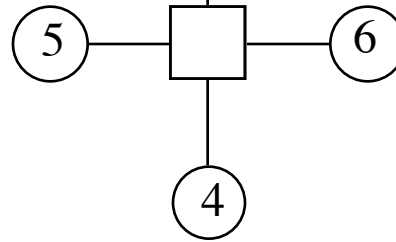
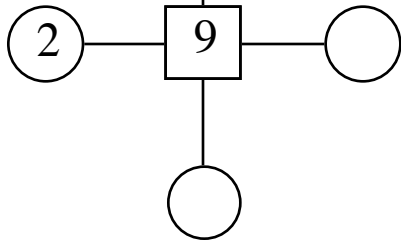
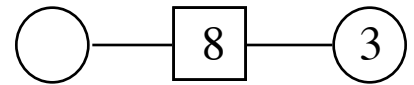
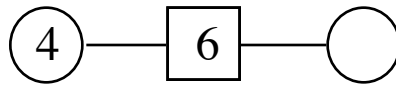
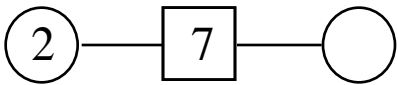
For example,



since $3 + 6 = 9$ the missing number in the square is 9.

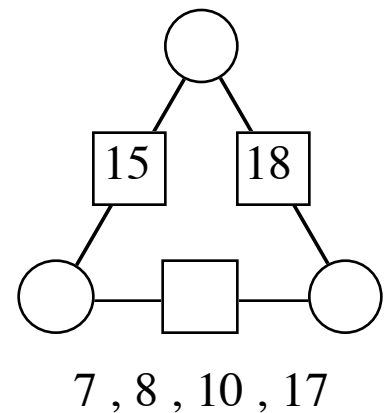
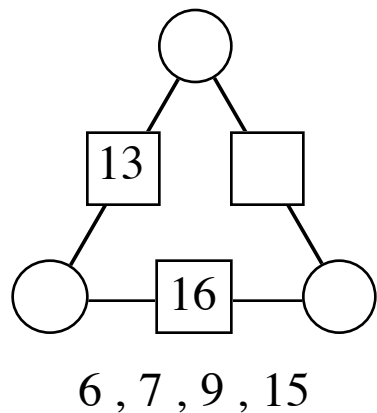
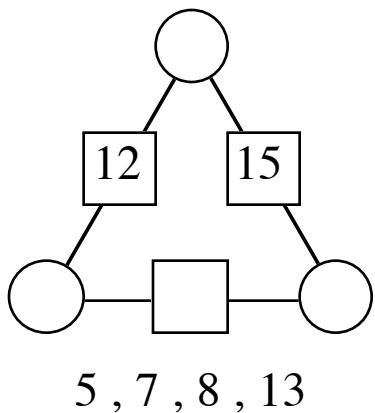
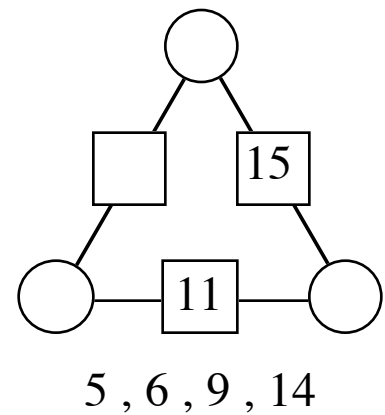
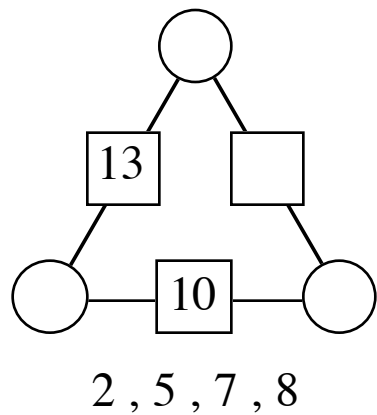
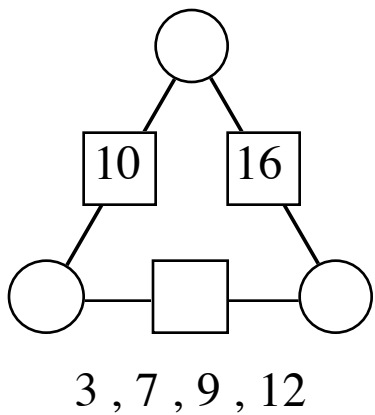
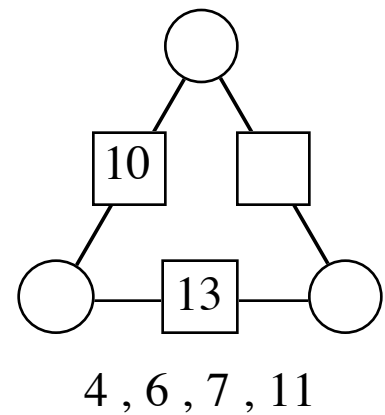
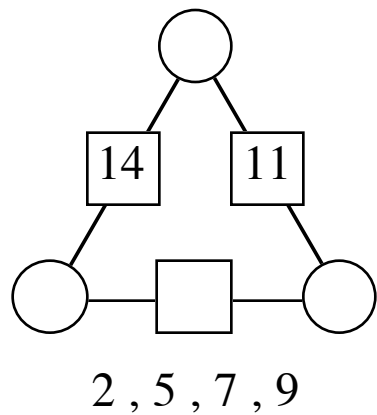
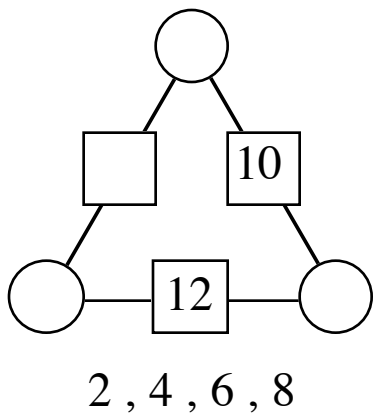
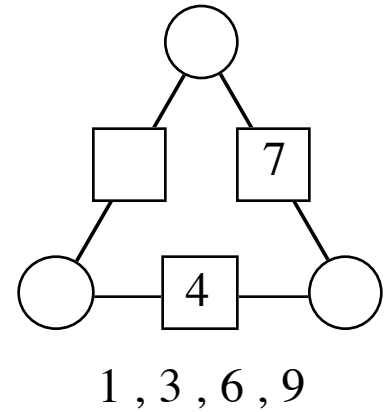
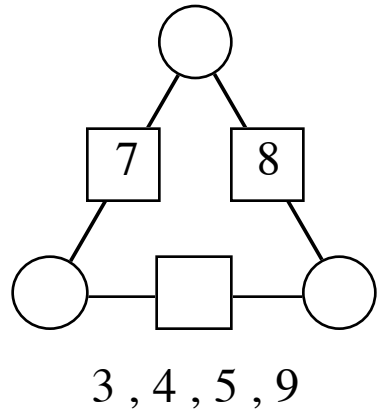
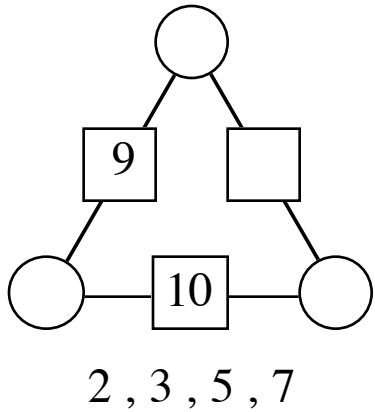


1. Fill in the missing numbers in the squares or circles.



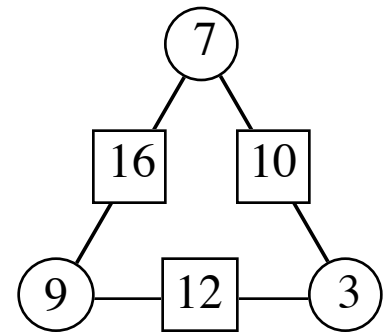
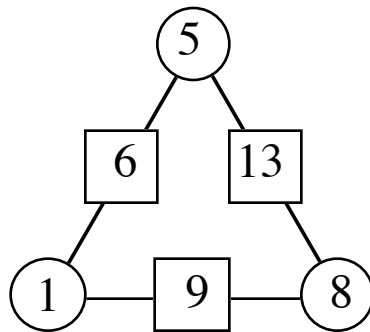
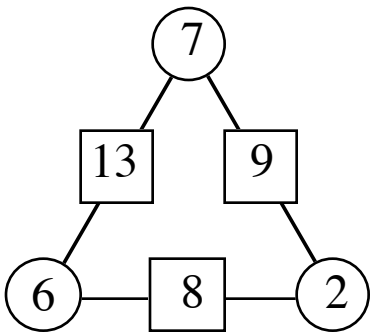
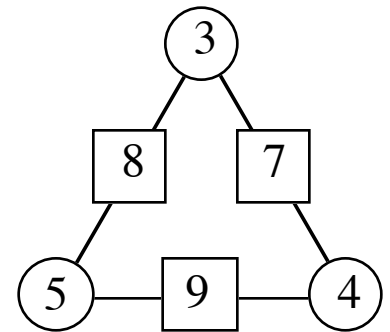
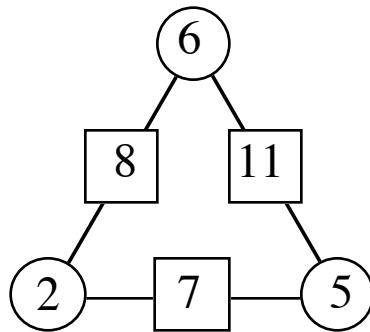
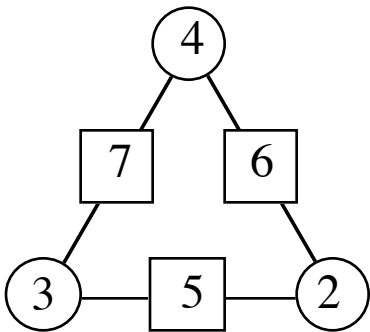
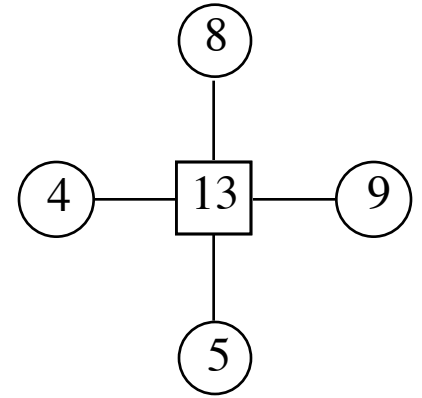
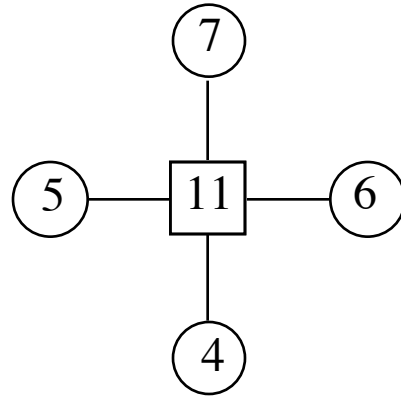
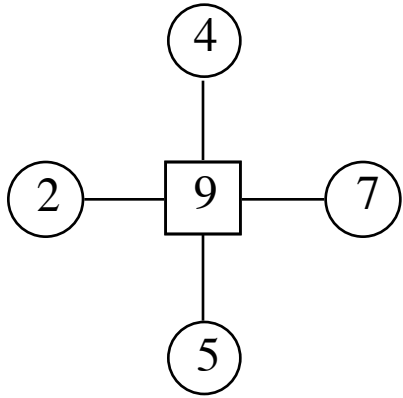
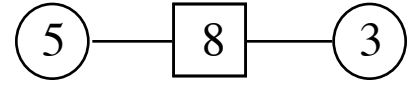
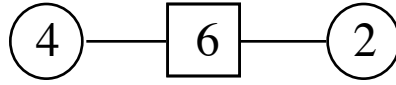
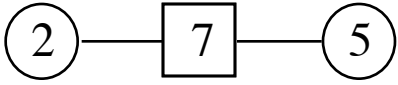
2. Fill in the missing numbers in the squares or circles.

The missing numbers are listed below each triangle and only these numbers are to be used.

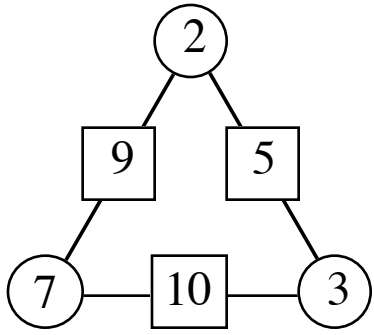


ANSWERS

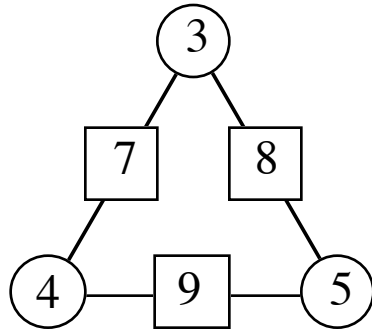
1.



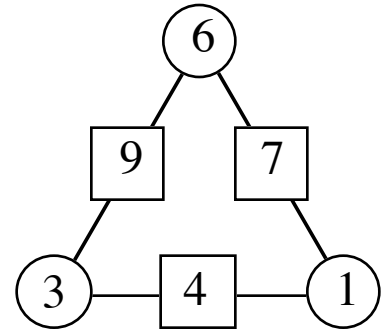
2.



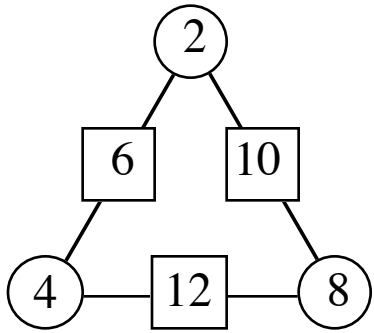
2, 3, 5, 7



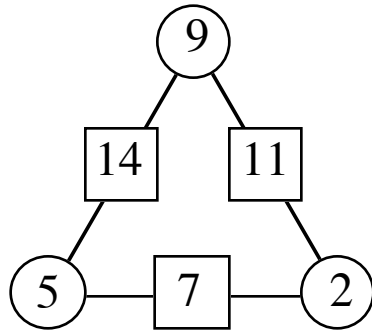
3, 4, 5, 9



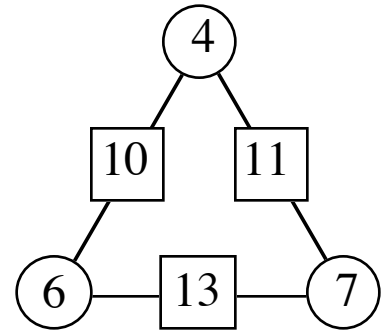
1, 3, 6, 9



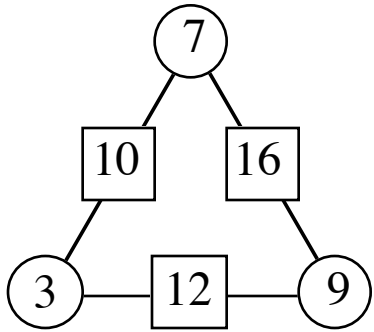
2, 4, 6, 8



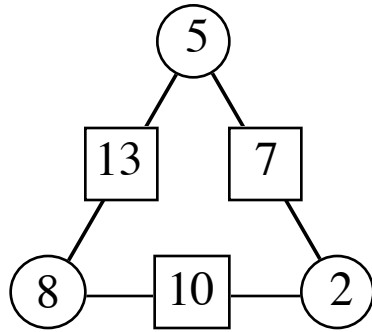
2, 5, 7, 9



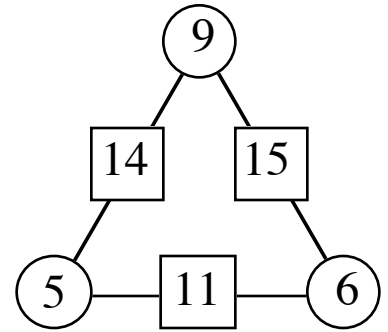
4, 6, 7, 11



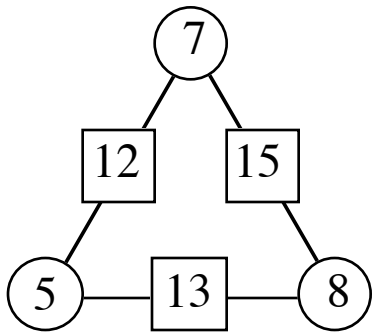
3, 7, 9, 12



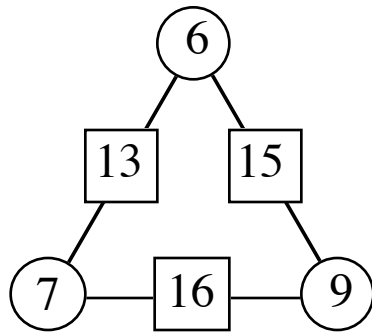
2, 5, 7, 8



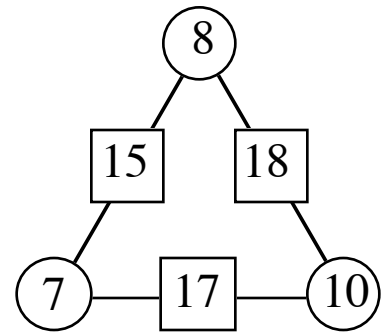
5, 6, 9, 14



5, 7, 8, 13



6, 7, 9, 15



7, 8, 10, 17