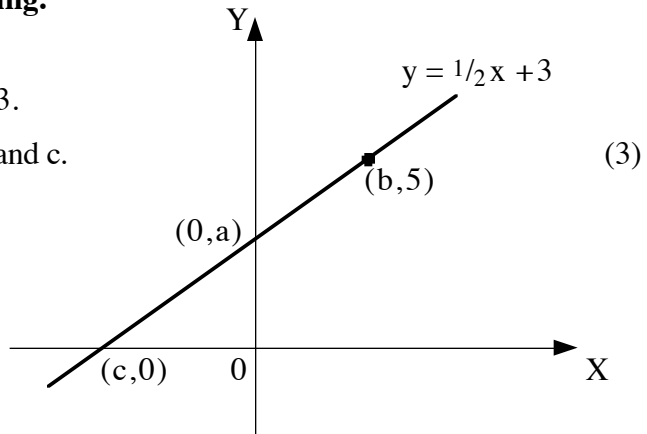


HOME EXERCISE 8

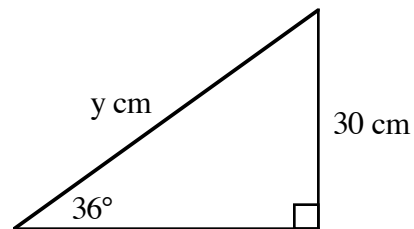
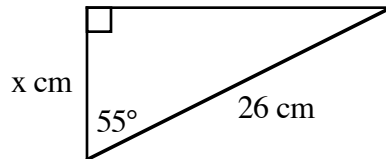
Set out carefully all appropriate working.

1. The graph shown has equation $y = \frac{1}{2}x + 3$.

Use the equation to find the values of a, b and c.



2. The triangles shown are right-angled.



Calculate the values of x and y , correct to **3 significant figures**.

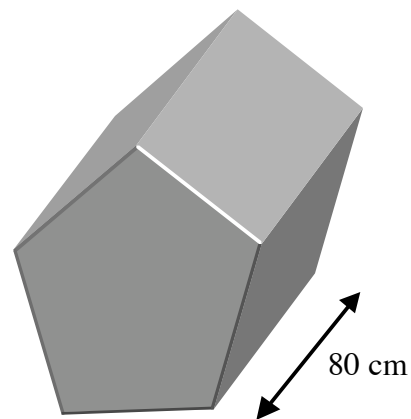
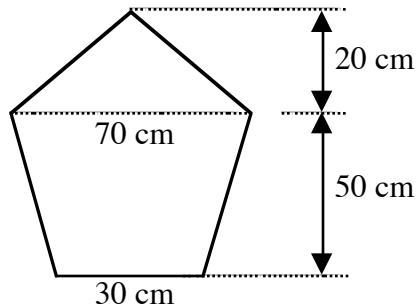
3. After the price of a radio is increased by 25% it costs £105.

Calculate the original price of the radio before the increase.

4. The prism shown has an end-face which is a pentagon.

The pentagon consists of a trapezium and a triangle with the dimensions shown on the second diagram.

The prism has a length of 80 cm.



- (a) Calculate the area of the end-face.

- (b) **Hence** calculate the volume of the prism.

Total 20 marks